



Total Pond

SePRO Total Pond -

React[®]

In-Season All-Purpose Aquatic Weed Control



Spring Summer Fall
Recommended Application Timing

Controls all forms of aquatic weeds in ponds, lakes and reservoirs

- Fast-acting contact control
- Kills only what you spray
- Suppresses some algae

Controls fresh water weeds in, on and around water: Shorelines, ponds, docks, and swimming areas.

Active Ingredient:

Diquat dibromide: [6,7-dihydrodipyrido(1,2-a:2',1'-c)pyrazinediium dibromide] 37.3%
 Other Ingredients..... 62.7%
Total 100.0%

Contains 2 pounds diquat cation per one (1) U.S. gallon (3.73 pounds diquat dibromide per gallon).
EPA Reg. No. 67690-53

KEEP OUT OF REACH OF CHILDREN CAUTION

Application Guidance

Mix 4.5 oz. with 3 gallons of water to cover 900 sq. ft., 4 ft. deep
One pint (this container) treats up to 3,200 sq. ft.
Fishing and Swimming is permitted following application.

DIRECTIONS FOR USE

It is a violation of Federal Law to use this product in a manner inconsistent with its labeling.

How SePRO Total Pond - React works

This product is an all-purpose, fast-acting, contact herbicide that controls unwanted floating, emergent and submersed aquatic weeds growing in the water and along the shoreline. This product controls weeds by interfering with photosynthesis that occurs within plant tissue. Absorption and herbicidal action is usually quite rapid with effects visible in a few days.

When to apply

This product should be applied when weeds are actively growing. Spray when the air is calm to minimize drift to desirable plants.

Where to apply

- along shorelines
- around docks or piers
- channels, canals, and drainage ditches
- wetlands and other natural areas

How to apply

Foliar Spray Targeting Floating & Emergent Weeds (i.e. duckweed, cattails)

- This product mixes readily with water. Add 1 ½ oz. to 1 gallon of water to sprayer tank. Add an aquatic non-ionic surfactant at a rate specified on that product's label.
- Close sprayer, shake/swirl well.
- If possible, adjust nozzle tip to apply a coarse spray. Spray directly on plants you want to control until they look glossy wet.

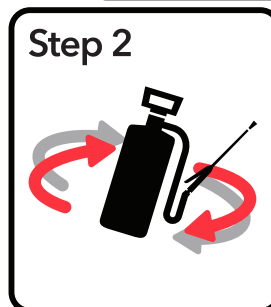
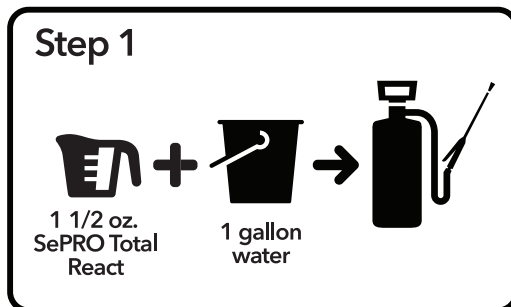
Surface Spray or Injection Targeting Submersed Weeds (i.e. naiads, pondweeds, watermilfoil)

- This product mixes readily with water. Based upon your average water depth of the treatment area, add the specified amount of product from Table 1 per gallon of water to a sprayer tank. Add an aquatic non-ionic surfactant at a rate specified on that product's label.
- Apply by boat or from a dock or shore.
- Surface spray and/or inject the spray solution by placing the sprayer tip under the surface of water while moving around the waterbody.

Table 1. Submersed Weeds Application Rates	
Average water depth in treatment area (ft.)	Rate (oz./gallon of water)
2	¾
4	1 ½
6	2 ¼
8	3

Example: Submersed weeds in average depth of 4 feet of water. Mix 4.½ oz. to 3 gallons of water to treat 900 square feet.

(step by step illustration of how to mix and apply)



- Regardless of application method, one gallon of spray solution covers approximately 300 sq. ft.
- For most situations, one pint makes about 10 ½ gallons and treats up to 3,200 sq. ft.

Tips for best results

- Apply directly to vegetation to be controlled insuring complete, uniform coverage; spray to glossy wet.
- Some species may require retreatment to achieve complete control. Wait 14 days before reapplication.
- Begin by treating from the shoreline, moving outward toward the middle of water body.
- Muddy water in the pond or sprayer can reduce effectiveness.

Use this product to treat susceptible weeds including:

bladderwort	naiad species
Brazilian elodea	pennywort
cattails	pondweed species
coontail	salvinia
duckweed	water lettuce
elodea	watermilfoil species
hydrilla	

Do not treat more than ¼ of the waterbody during a single application to avoid the potential for depletion of oxygen due to decaying vegetation. Wait at least 14 days before completing treatment of the remainder of the waterbody.

Obtain Required Permits: Consult with appropriate state or local pesticide and/or water authorities before applying this product in or around public waters. Permits and posting or treatment notification may be required by state, tribal, or local public agencies.

For application only to **still water** (i.e. ponds, lakes, reservoirs) where there is **minimal or no outflow to public waters**.

Treated water may be used according to the water use restrictions set forth in Table 2 or when an approved assay or analytical method establishes that the water does not contain more than the designated maximum contaminant level goal (MCLG) of 0.02 mg/l (ppm) of diquat dibromide (calculated as the cation). For preparing agricultural sprays for food crops, turf or ornamentals (to prevent phytotoxicity), do not use water treated with this product before the specified time period.

TABLE 2: WATER USE RESTRICTIONS FOLLOWING APPLICATIONS WITH THIS PRODUCT (Days)				
Drinking	Fishing and Swimming	Livestock/ Domestic Animals Consumption	Irrigation to Turf and Landscape Ornamentals	Irrigation to Food Crops and Production Ornamentals
3 days	0	1 day	3 days	5 days

Environmental Hazards

This pesticide is toxic to aquatic invertebrates. For Terrestrial Uses do not apply directly to water, or to areas where surface water is present, or to intertidal areas below the mean high water mark. Do not contaminate water when disposing of equipment wash waters. For Aquatic Uses do not apply directly to water except as specified on this label.

STORAGE AND DISPOSAL

Pesticide Storage: Keep from freezing. Store in original container only. Do not store near feed or foodstuffs. In case of leak or spill, use absorbent materials to contain liquids and dispose as waste.

Container Handling

Non-refillable Container. DO NOT reuse or refill this container.

If empty: Place in trash or offer for recycling if available. If partly filled: Call your local solid waste agency for disposal instructions. Never place unused product down any indoor or outdoor drain.

CONTAINER IS NOT SAFE FOR FOOD, FEED, OR DRINKING WATER!

Hazards to Humans and Domestic Animals

CAUTION

Harmful if inhaled. Harmful if swallowed. Causes moderate eye irritation. Avoid breathing spray mist and contact with eyes or clothing. Wash thoroughly with soap and water after handling and before eating, drinking, chewing gum, using tobacco or using the toilet. Remove and wash contaminated clothing before reuse.

FIRST AID	
If inhaled:	<ul style="list-style-type: none"> • Move person to fresh air. • If person is not breathing, call 911 or an ambulance, then give artificial respiration, preferably mouth-to-mouth, if possible. • Call a poison control center or doctor for further treatment advice.
If swallowed:	<ul style="list-style-type: none"> • Call a poison control center or doctor immediately for treatment advice. • Have person sip a glass of water if able to swallow. • Do not induce vomiting unless told to do so by the poison control center or doctor. • Do not give anything to an unconscious person.
If in eyes:	<ul style="list-style-type: none"> • Hold eye open and rinse slowly and gently with water for 15 - 20 minutes. Remove contact lenses, if present, after the first 5 minutes, then continue rinsing eye. • Call a poison control center or doctor for treatment advice.

HOTLINE NUMBER
Have the product container or label with you when calling a poison control center or doctor, or going for treatment. In case of emergency endangering health or the environment involving this product, call INFOTRAC at 1-800-535-5053 .

Note to Physicians: To be effective, treatment for diquat poisoning must begin IMMEDIATELY. Treatment consists of binding diquat in the gut with suspensions of activated charcoal or bentonite clay, administration of cathartics to enhance elimination, and removal of diquat from the blood by charcoal hemoperfusion or continuous hemodialysis.

PERSONAL PROTECTIVE EQUIPMENT (PPE)

Users must wear the following:

Protective eyewear (goggles, face shield, or safety glasses), long-sleeve shirt, long pants, shoes plus socks, and waterproof gloves. Keep and wash PPE separately from other laundry. Discard clothing and other absorbent material that have been drenched or heavily contaminated with this product's concentrate. Do not reuse them.

USER SAFETY RECOMMENDATIONS

Users must: Wash the outside of gloves before removing. Wash hands before eating, drinking, chewing gum, using tobacco, or using the toilet. Remove clothing/PPE immediately if pesticide gets inside. Then wash thoroughly and put on clean clothing. Remove PPE immediately after handling this product. As soon as possible, wash thoroughly and change into clean clothing.

Warranty Disclaimer: SePRO Corporation warrants that this product conforms to the chemical description on the product label. Testing and research have also determined that this product is reasonably fit for the uses described on the product label. To the extent consistent with applicable law, SePRO Corporation makes no other express or implied warranty of fitness or merchantability nor any other express or implied warranty and any such warranties are expressly disclaimed.

Misuse: Federal law prohibits the use of this product in a manner inconsistent with its label directions. To the extent consistent with applicable law, the buyer assumes responsibility for any adverse consequences if this product is not used according to its label directions. In no case shall SePRO Corporation be liable for any losses or damages resulting from the use, handling or application of this product in a manner inconsistent with its label.

For additional important labeling information regarding SePRO Corporation's Terms and Conditions of Use, Inherent Risks of Use and Limitation of Remedies, please visit <http://seprolabels.com/terms> or scan the image below.



Need help? A SePRO Pond Advisor can remotely and accurately measure the size of your pond and discuss a personalized strategy to keep your pond clear of unwanted algae. Call us TOLL FREE at 1-844-766-2727 or email service@seprototal.com

©Copyright 2016 SePRO Corporation
SePRO Total Pond - React is a registered trademark of SePRO Corporation

FPL20151006



SePRO Corporation
11550 North Meridian Street, Suite 600
Carmel, IN 46032, U.S.A.